

FARMERS ELECTRIC COOPERATIVE CORPORATION

Rate Schedule (Effective 4/1/2016)

RESIDENTIAL – RATE A

Peak Months

Customer Charge	\$11.26/Month
All Summer kWh	\$.09630/kWh

Off-Peak Months

Customer Charge	\$11.26/Month
0-750 Winter kWh	\$.09360/kWh
Over 750 Winter kWh	\$.07513/kWh

COMMERCIAL – RATE B

Peak Months

Customer Charge	\$11.26/Month
All Summer kWh	\$.08003/kWh

Off-Peak Months

Customer Charge	\$11.26/Month
0-500 Winter kWh	\$.08003/kWh
Over 500 Winter kWh	\$.06354/kWh

COMMERCIAL(Optional) – RATE B-1

Customer Charge	\$21.80/Month
All kWh	\$.03871/kWh
Demand Charge	\$10.71/kW

AGRICULTURAL PROCESSING(Granary) – RATE AP

Customer Charge	\$22.25/Month
All kWh	\$.05973/kWh
Demand Charge	\$3.96/kW

AGRICULTURAL WATER PUMPING – RATE I

Customer Charge	\$22.25/Month
All kWh	\$.08320/kWh
Demand Charge	\$18.46/kW

AGRICULTURAL CONTROLLED WATER PUMPING – RATE I-1

Customer Charge	\$22.25/Month
All kWh	\$.07279/kWh
Demand Charge	\$11.69/kW

SECURITY LIGHTING – RATE SL

250 Watt-Photo Controlled	\$8.97/Fixture
250 Watt-Continuous	\$14.14/Fixture
500 Watt-Photo Controlled	\$11.88/Fixture
500 Watt-Continuous	\$21.56/Fixture

MISCELLANEOUS CHARGES

Membership Fee (Refundable)	\$15.00/Meter
Connect Fee	\$25.00/Meter
Deposit Residential*	\$182.00/Meter
Returned Check Fee	\$25.00
Collection Fee	\$25.00
Reconnect Fee (During Hours)	\$25.00
Reconnect Fee (After Hours)	\$50.00
Meter Test Fee	\$20.00

*Refundable after 12 consecutive on-time payments.

TAXES AND OTHER ADJUSTMENTS

Sales Tax

Farmers Electric Cooperative is required to collect appropriate State, County and City sales tax. Under certain circumstances sales tax may be reduced for low income or certain agricultural facilities. If you think you may apply, please contact our office for information.

Franchise Tax

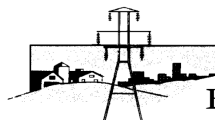
Farmers Electric Cooperative is required to collect Franchise Taxes for members living within certain incorporated city limits.

Cost of Debt Adjustment

Certain debt charges(Interest) related to construction and or upgrades to Farmers Electric's equipment, lines and substations. May increase or decrease quarterly and is shown on the power bill on a kWh basis.

Cost of Energy/RTO Adjustment

A monthly adjustment that recovers the variable cost of generating power and transmitting power over the transmission grid. This adjustment may increase or decrease monthly and is shown on the power bill on a kWh basis.



FARMERS ELECTRIC
COOPERATIVE CORPORATION

300 HIGHWAY 367 NORTH • NEWPORT, ARKANSAS 72112 • 523-3691